

Castles, Baked Beans and Bellotto



Where is Germany?

Why do we have castles?

Do we all have a point of view...

... and is mine the same as my Great Aunt
Nellie's?

Am I big or am I small?

Who even is Bernardo Bellotto??

And what have Baked Beans got to do with it?

Inspired by Bernardo Bellotto's *The Fortress of Königstein from the North* c 1756-58, we've been thinking about how our point of view can make things big or small.

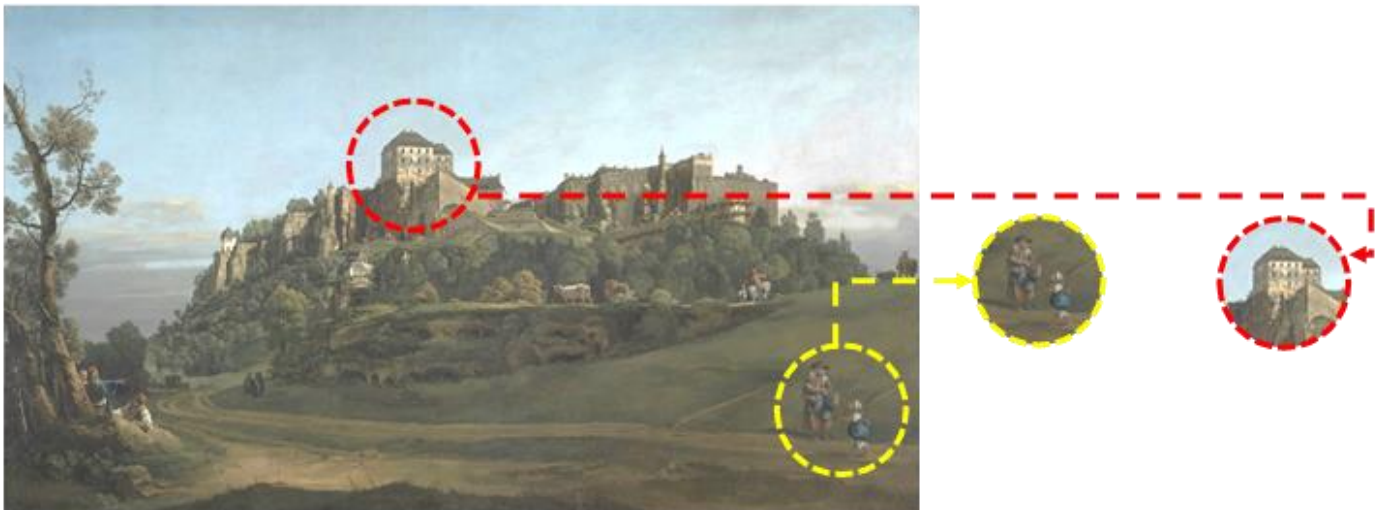


Why does Bellotto make things big or small?

Bernardo Bellotto 1722–1780 **The Fortress of Königstein from the North** about 1756-8 ©The National Gallery



In this painting, Bellotto has made the people look bigger than the fortress.



But people aren't bigger than fortresses!
So . . . why has he done this?

By placing the people at the front of the painting (the foreground) Bellotto makes them appear closer to us and therefore bigger. So the fortress isn't small, it is just further away in the distance.

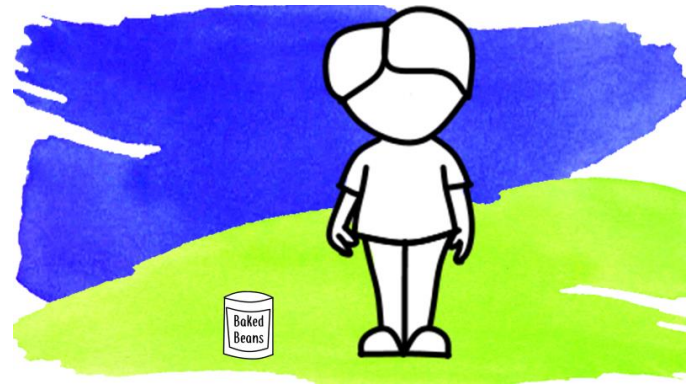
The fortress isn't
small! It's far away.



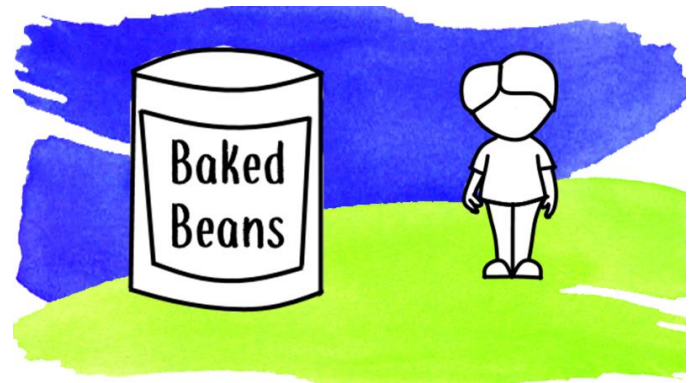
Have a go!

Find a can of baked beans

and a human being.



Holding the can in your hand, try moving it nearer to you (into the *foreground*) so that it looks the same size as a person!



Did you know?

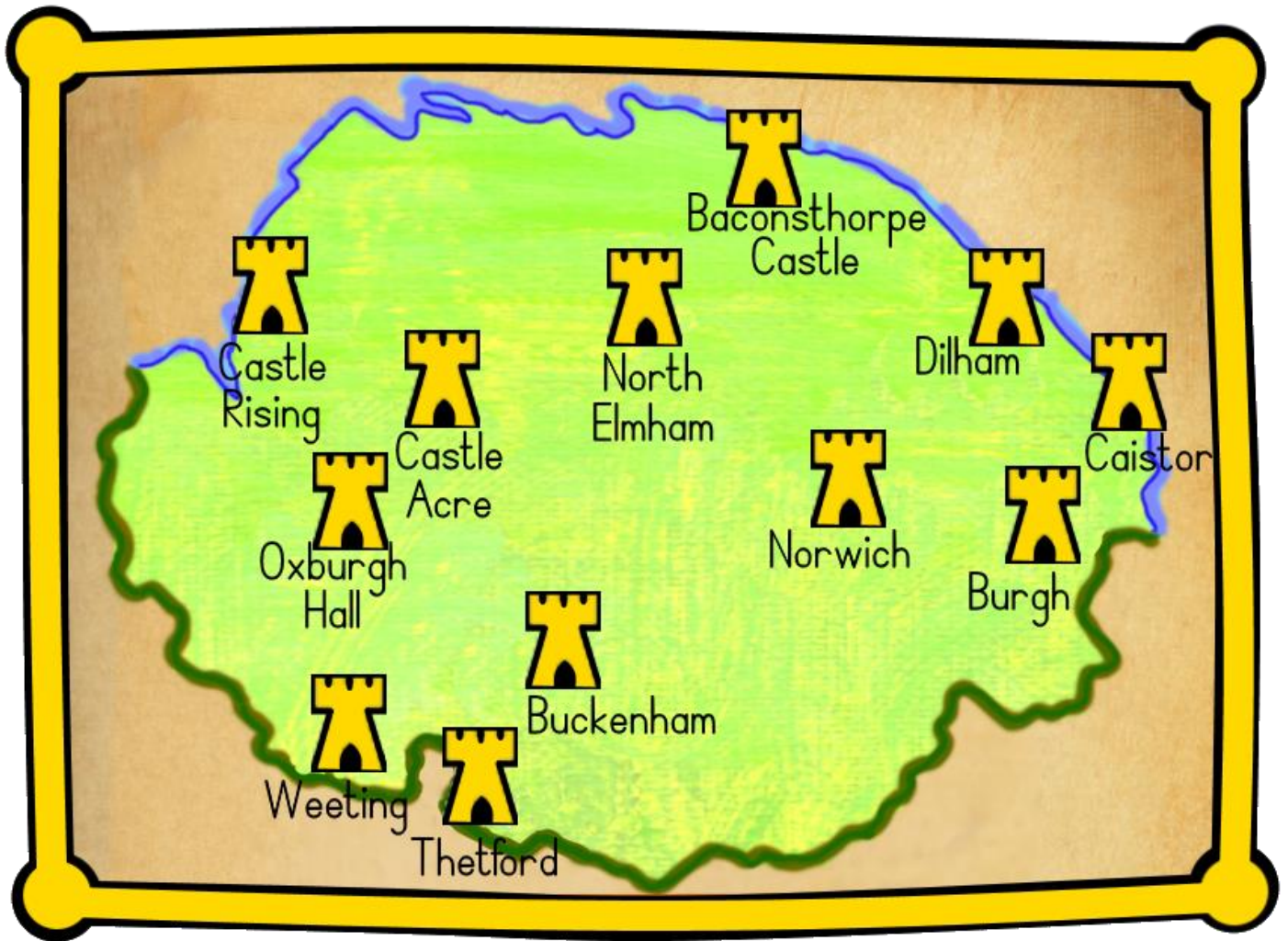
The word **castle** is derived from the Latin word, 'castellum', meaning a fortified place or structure?

'Fortified' means to make something stronger, so a 'fort' is another way of saying 'fortified structure'!

So, this means that fortresses and castles are the same thing!

'In The Picture' . . . out of the house!

Who knew that Norfolk had so many castles! Which one is on your doorstep?



Castles were designed as fortified structures for protection and also as symbols of wealth and power.

Whilst some have fallen into ruin, others have new uses; Norwich Castle for example, is now a museum and art gallery.

The Königstein Fortress, featured in Bellotto's painting, is a real castle in Germany. You can do a **360°** tour of it [online](#).

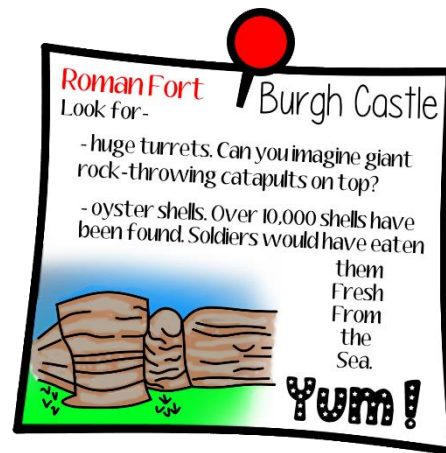
Check out our post-its to impress your friends with your castle credentials!

Roman Forts like Burgh Castle.

When you visit these, look for –

- huge turrets. Can you imagine giant rock-throwing catapults on top?
- oyster shells. Over 10,000 shells have been found here. The Roman soldiers would have eaten them fresh from the sea.

Yum!

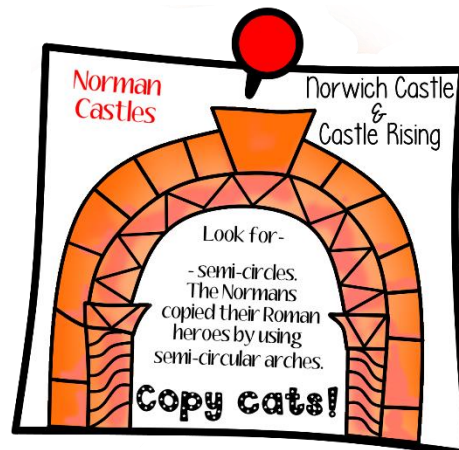


Norman Castles like Norwich Castle and Castle Rising.

When you visit these, look for –

- semi-circles. The Normans copied their Roman heroes by using semi-circular arches.

Copy cats!



Late Medieval Fortified Manor Houses like Baconsthorpe Castle.

When you visit these, look for –

- tracery-decorated stone window frames. This type of castle protects people **and** looks pretty.

Show offs!



There are lots of castles all over Europe and examples can be found in Africa, Asia, the Americas. . . practically everywhere! Whilst we may not be able to visit those, there are plenty right here in Norfolk for you to discover.

Have fun!



Bernardo Bellotto 1722–1780

The Fortress of Königstein from the North

about 1756-8

Oil on canvas

132.1 × 236.2 cm

The National Gallery, London. Bought with the support of the American Friends of the National Gallery, The National Gallery Trust, the Estate of Mrs Madeline Swallow, Art Fund (with a contribution from The Wolfson Foundation), Howard and Roberta Ahmanson, The Deborah Loeb, Brice Foundation, Mrs Mollie W. Vickers, The Manny and Brigitta Davidson Charitable Foundation, The Sackler Trust and through private appeal, 2017