

At B. Dug out April 22nd - to.

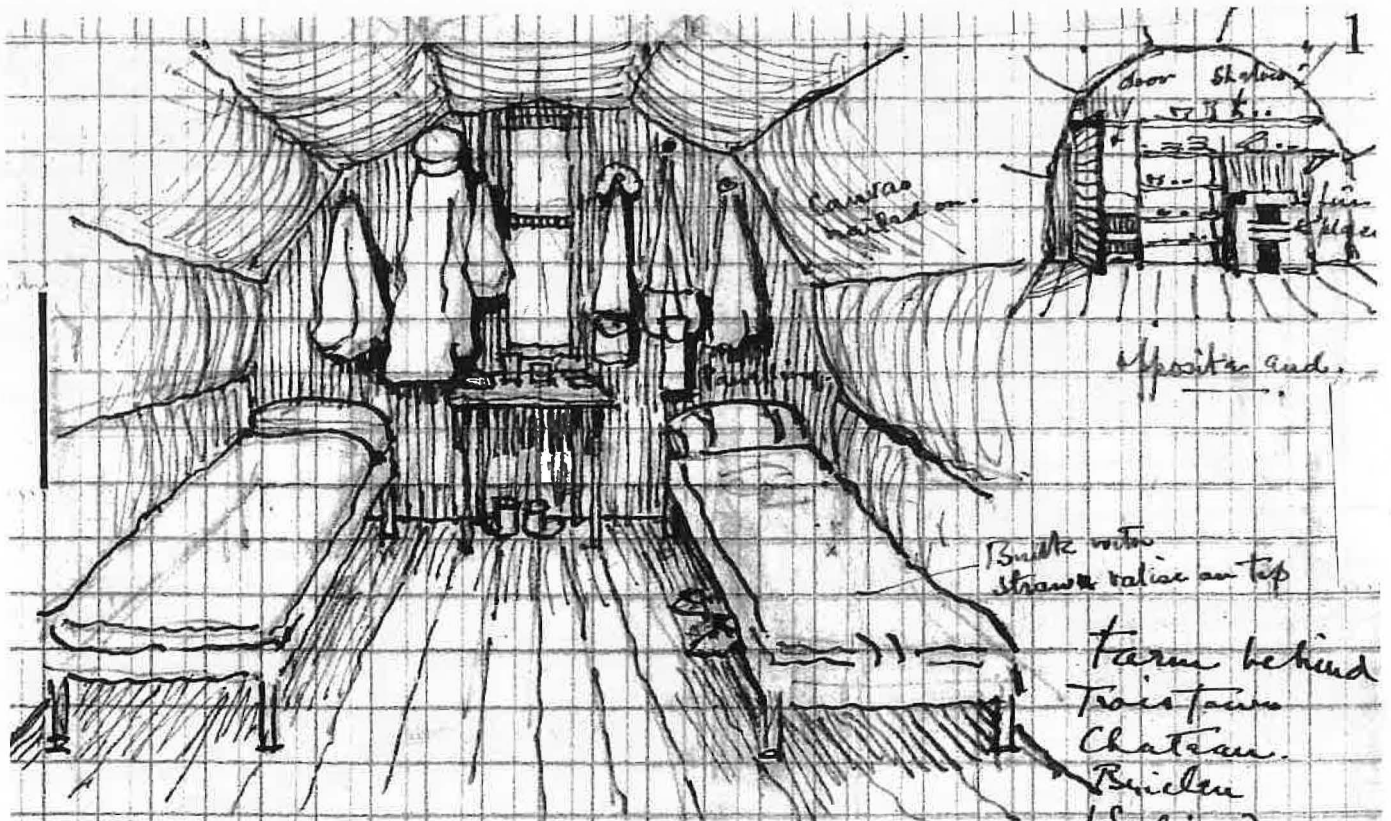
McKasby + Self. 1916. about 9'6" x 12'0" x 6'0" at highest point.

Canvas
lined on.

Opposite end.

Smelt with
straw & ralise on top

Farm behind
Troisfontains
Chateau.
Beiller
(Salient).



At B. Dug out April 22nd - to.

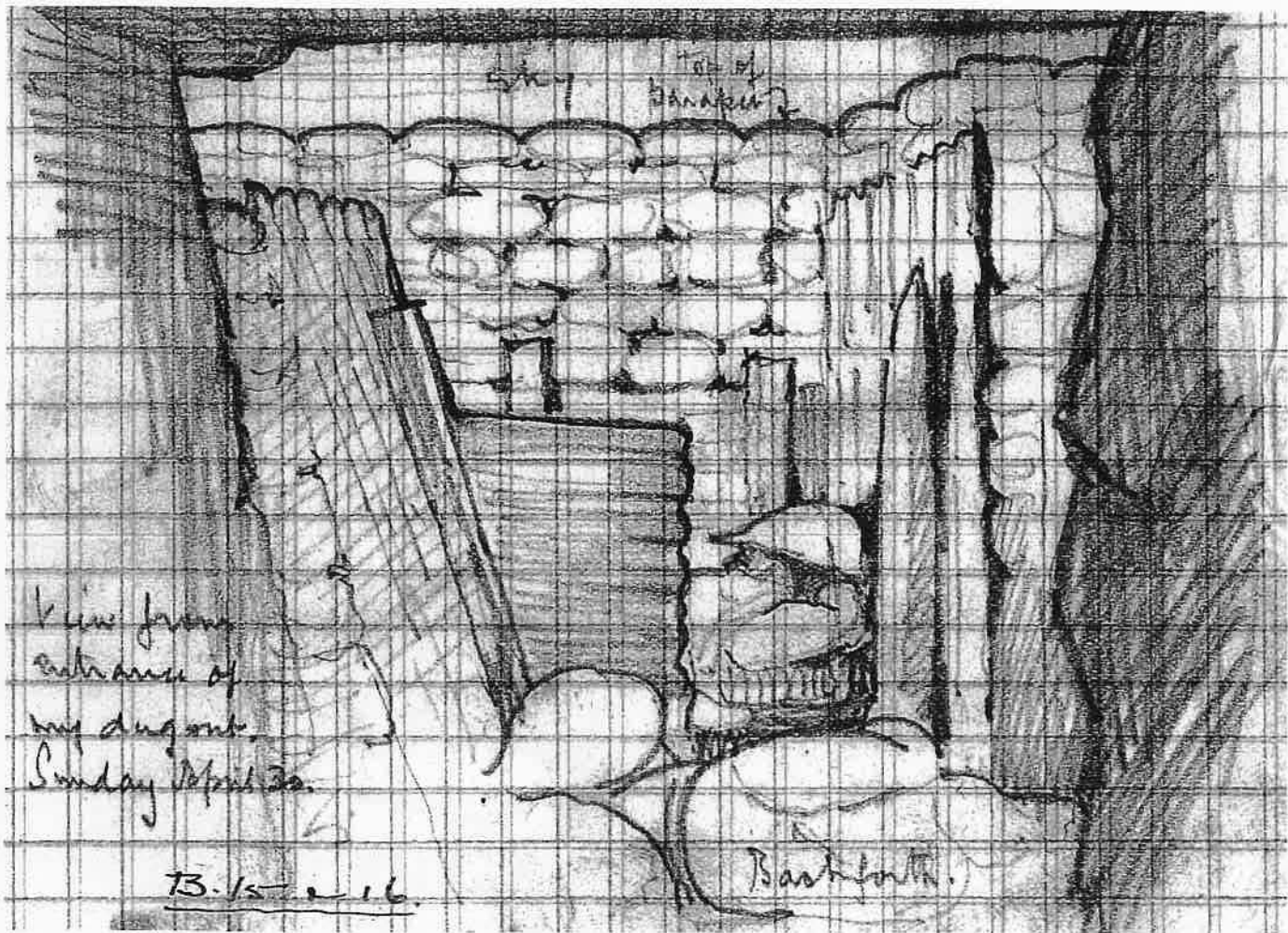
McKasby + Self. 1916. about 9'6" x 12'0" x 6'0" at highest point.

Canvas
lined on.

Opposite end.

Smelt with
straw & ralise on top

Farm behind
Troisfontains
Chateau.
Beiller
(Salient).

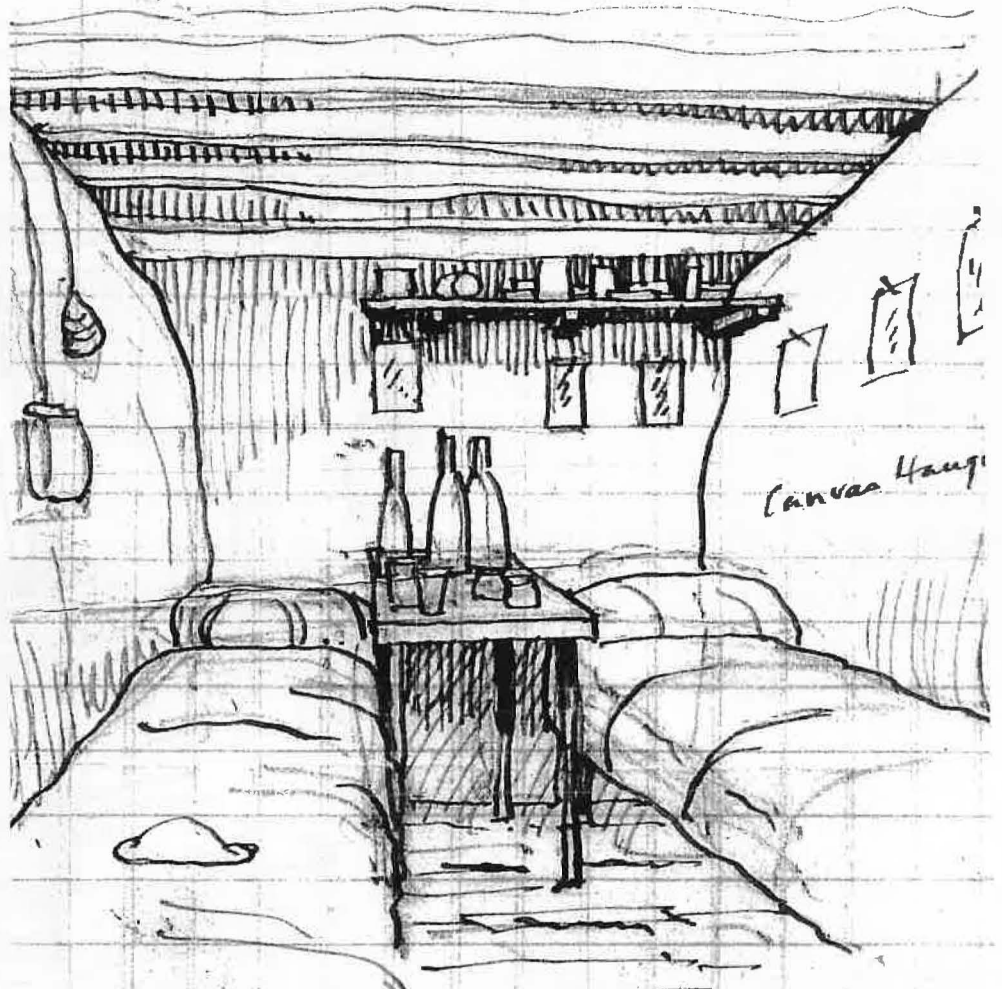


sky
Top of
Dugout

View from
entrance of
my dugout.
Sunday April 30.

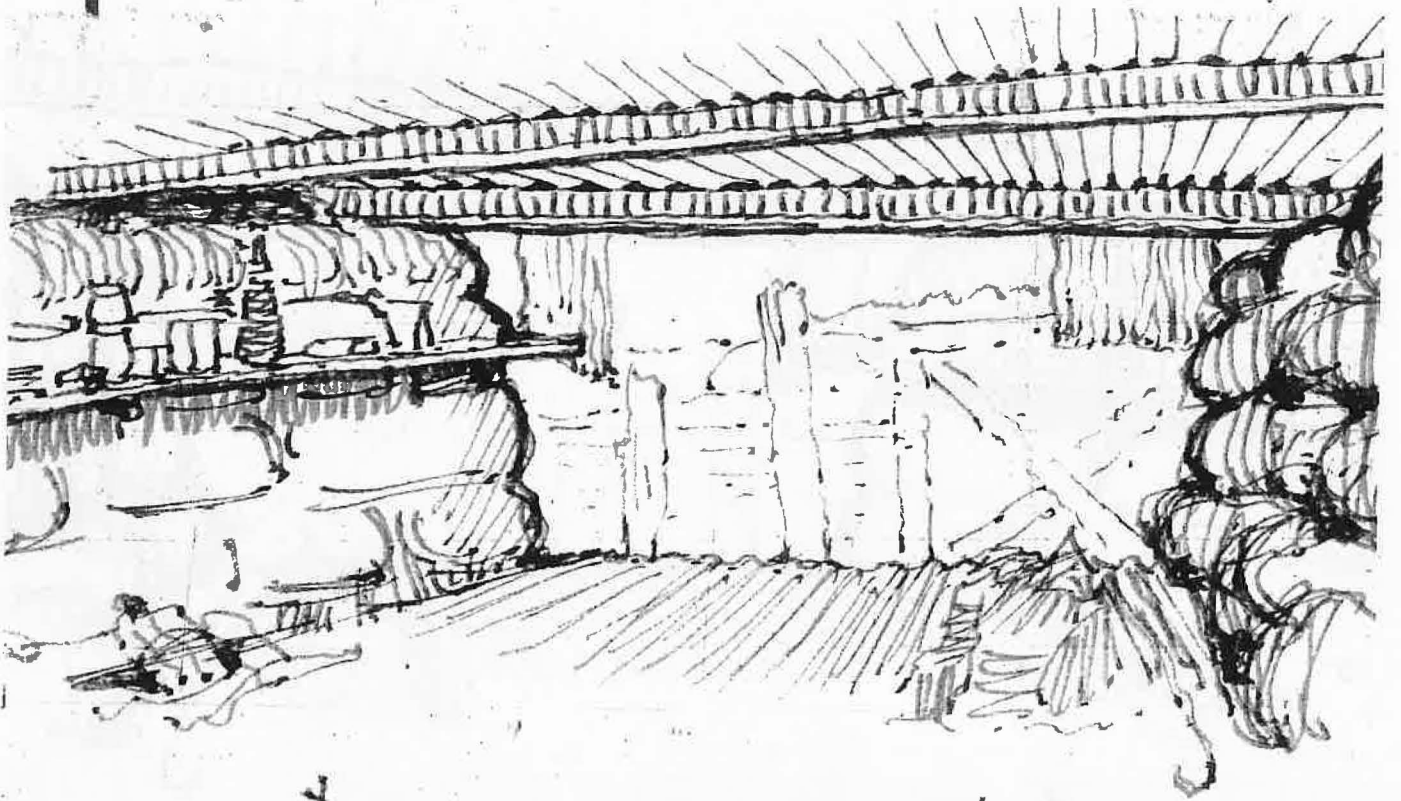
B. 15 - 16

Bashforth.



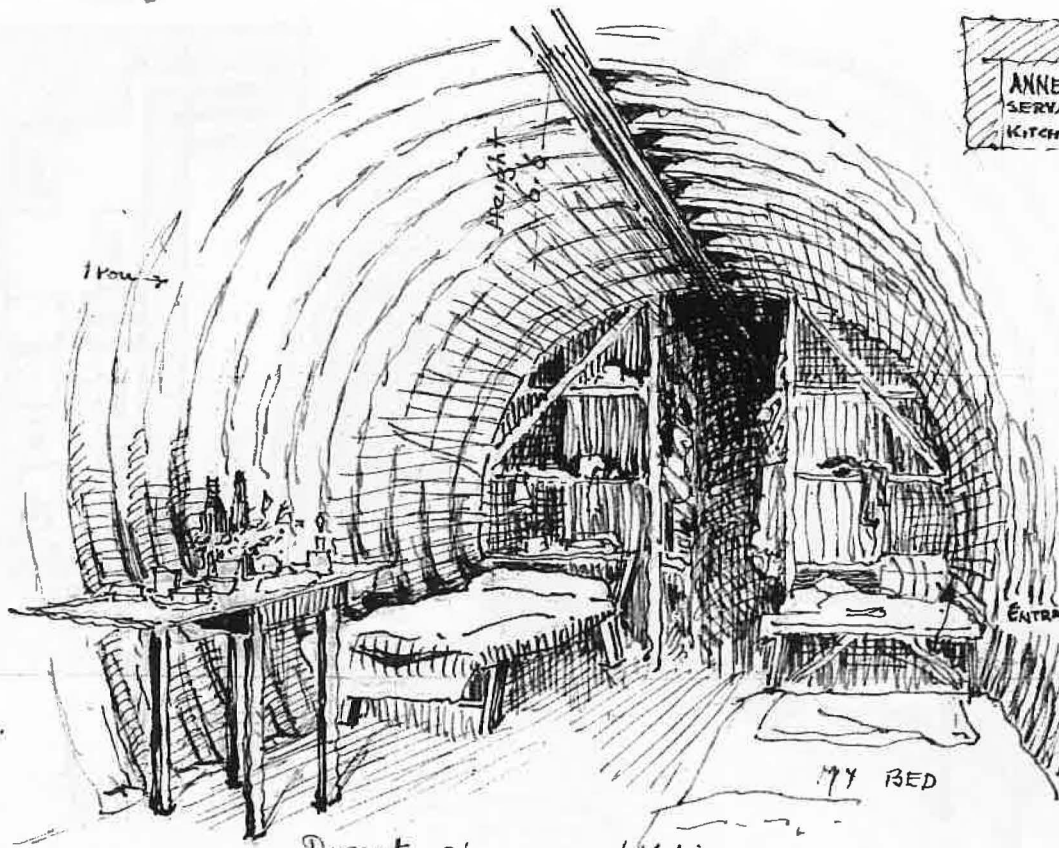
Canvas Hang

Arg ant. Frascati. May 8th
Jones & Self.

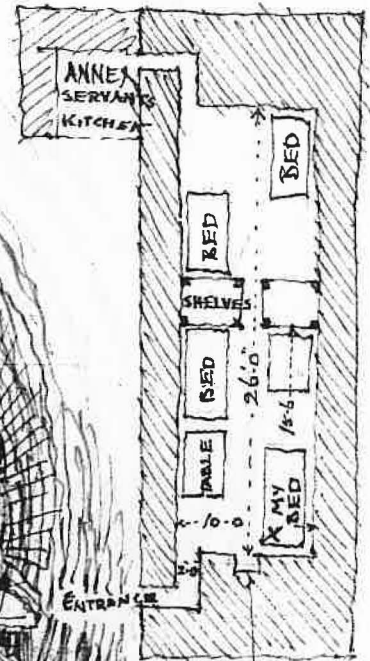


Dug out. B.13. May. 18/19 —

. 2H. Bachforth. & Self. 4'0" x 7'0" x 3'0"

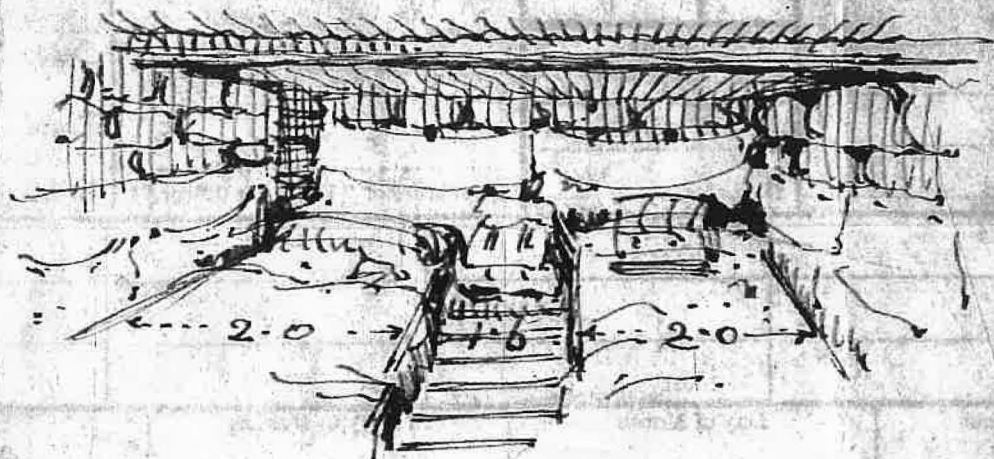


PLAN.

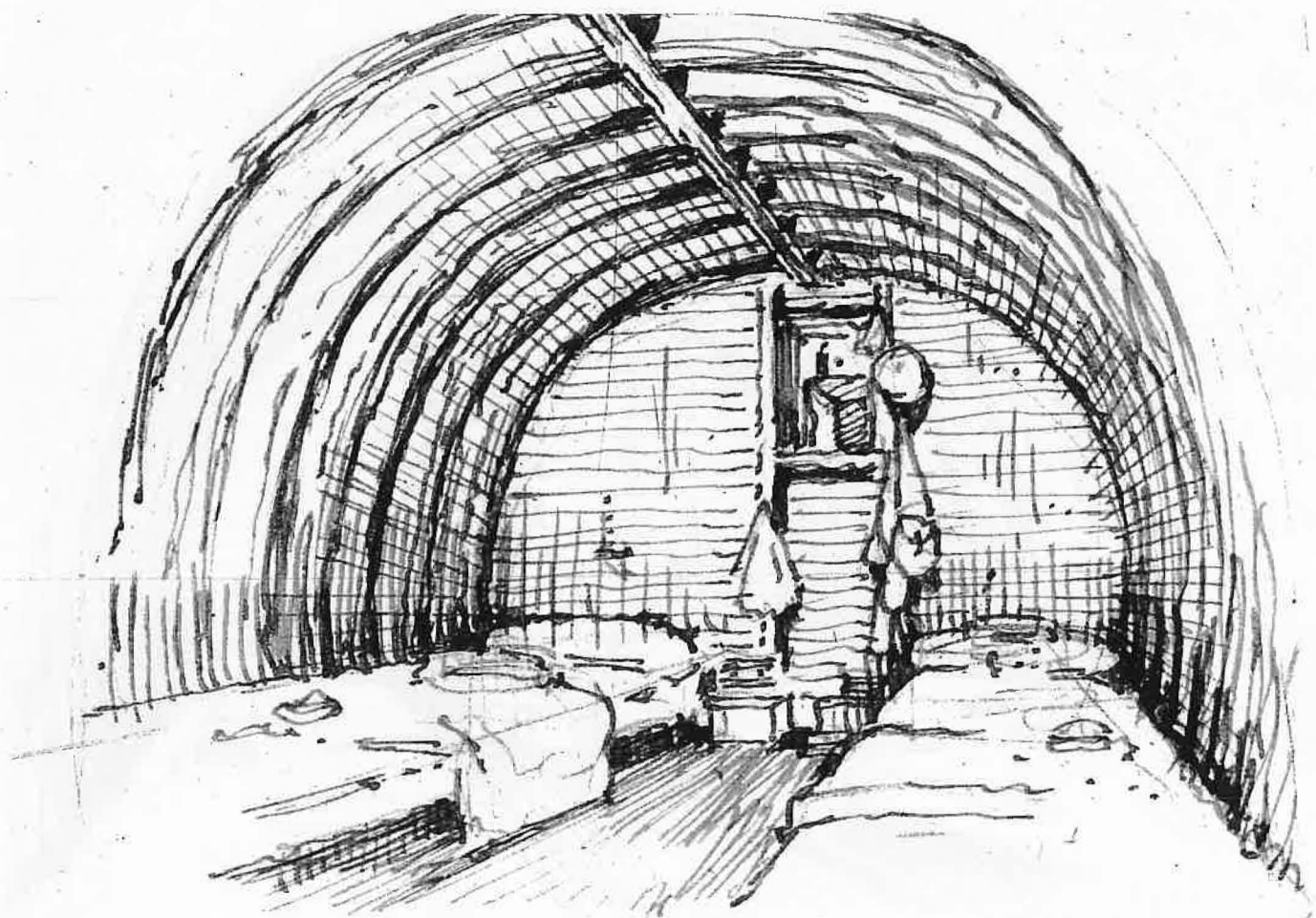


Dugout: 26.0 x 10.0 x 6.6 high.
 Back for me + self: 23/24 May to.

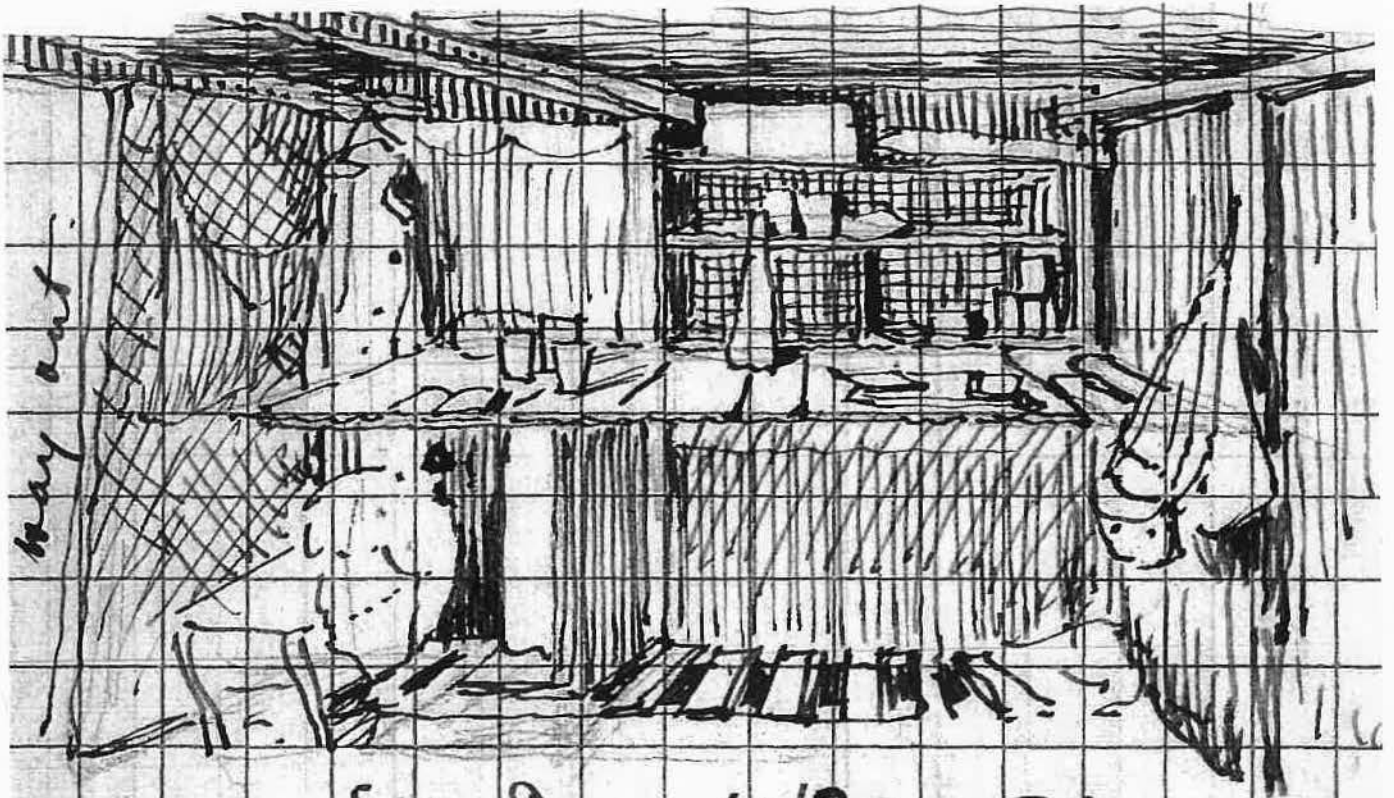
L.2. Defense Between Billerica
 of Canal Bank.



Dug out. 5.13. with Jack Case. 5.6 x 6.0 x 4.0
one night. May 22/23 1916.



de C... - 5.11 7 4 10

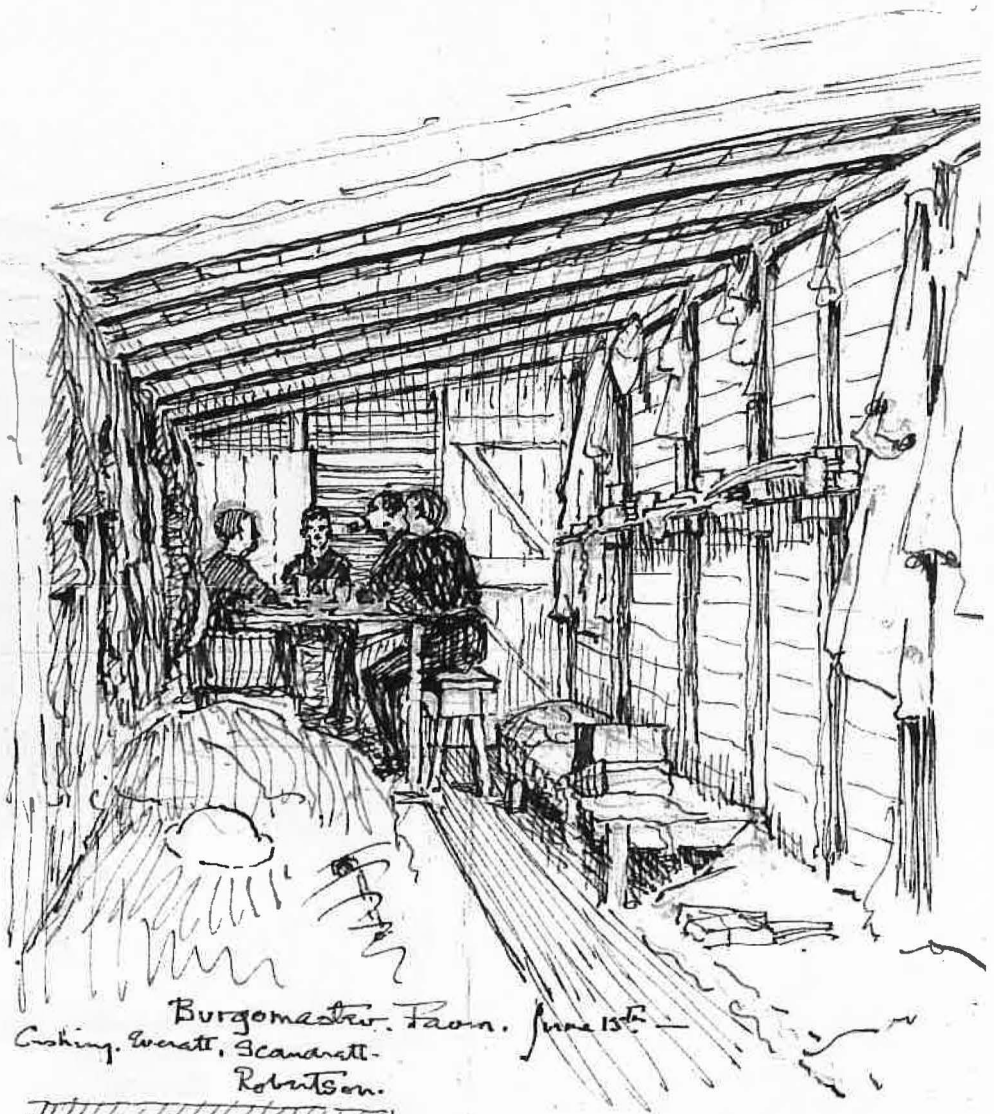


way out

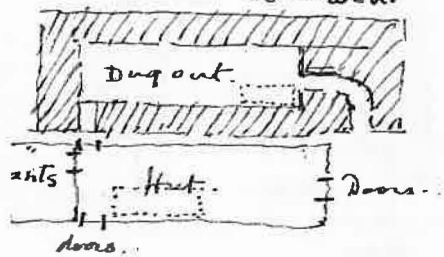
S. 14 D. agent: 10-0 x S. 0

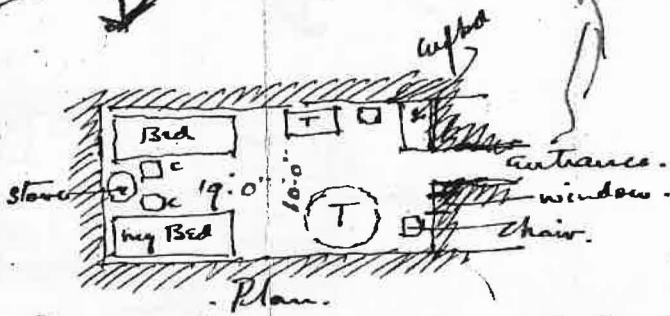
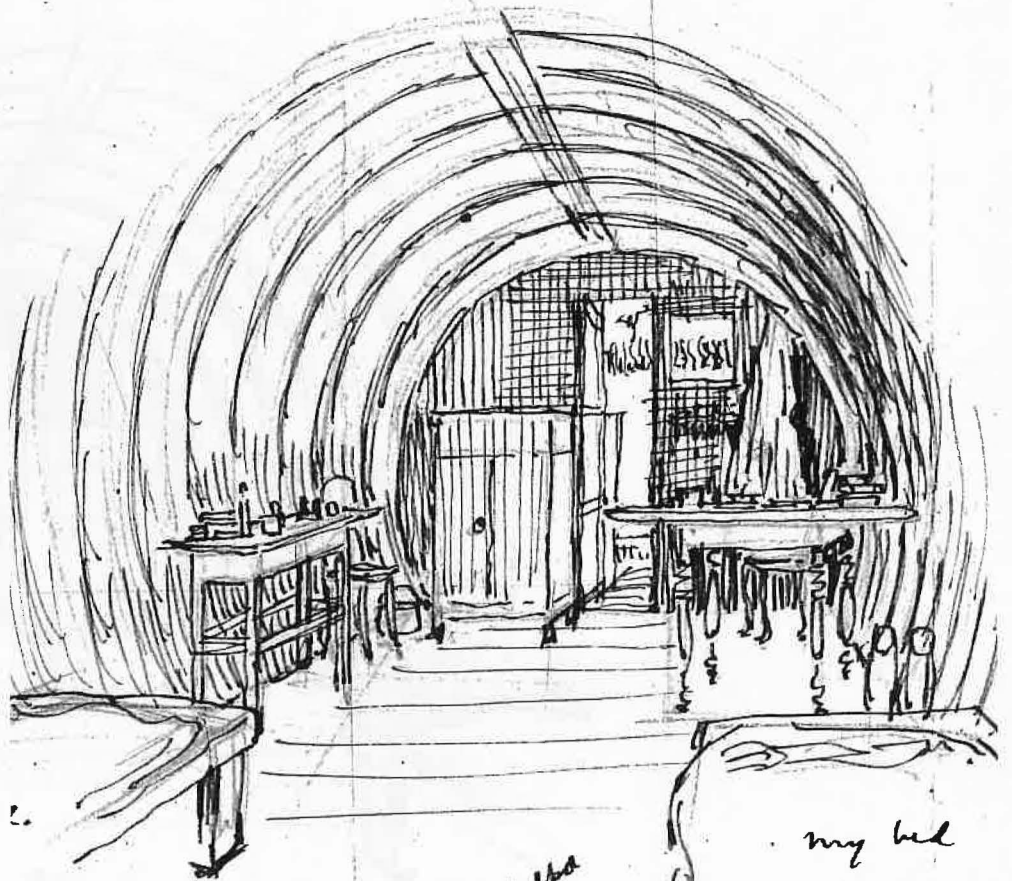
Self. Morgan. Suffolk O.

June 7th

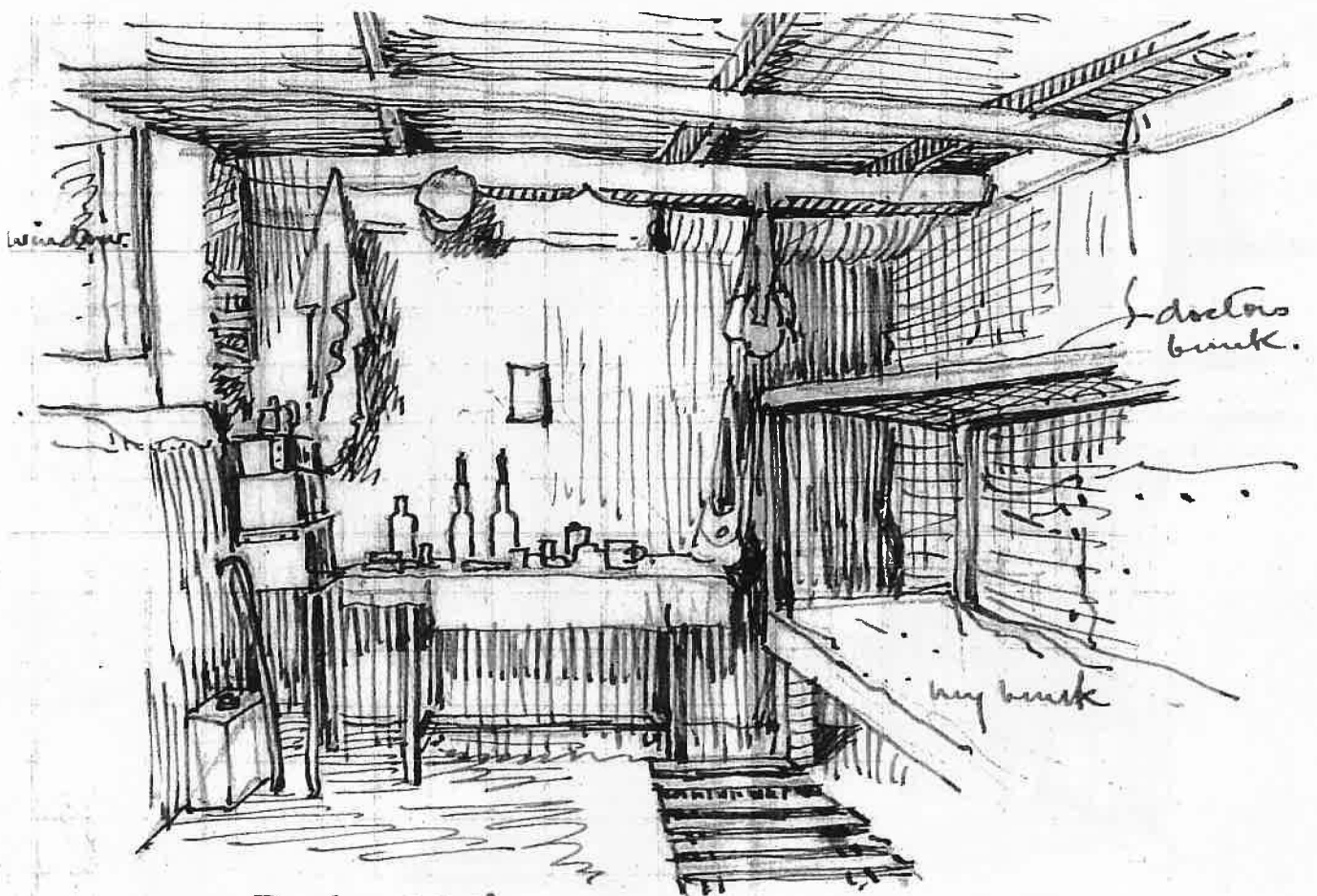


Burgomaster. Room. June 13th -
Cushing, West, Scandrett -
Robinson.





Dugout. Jones + Self. Adj. and Sec. Adj.
 19'0" x 10'0" x 6'0" July. 25 - 27th 1916. H.G.

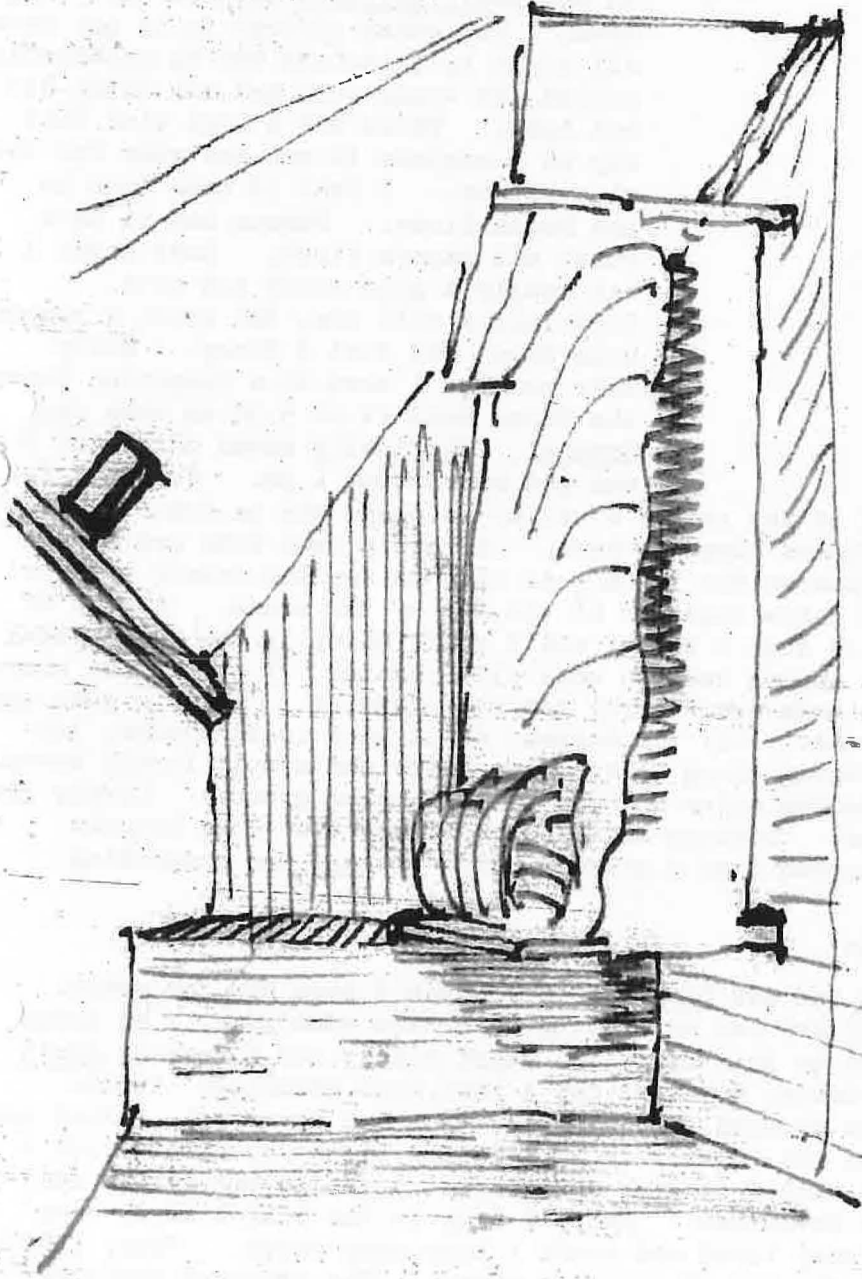


Window

Doctor's bunk.

my bunk

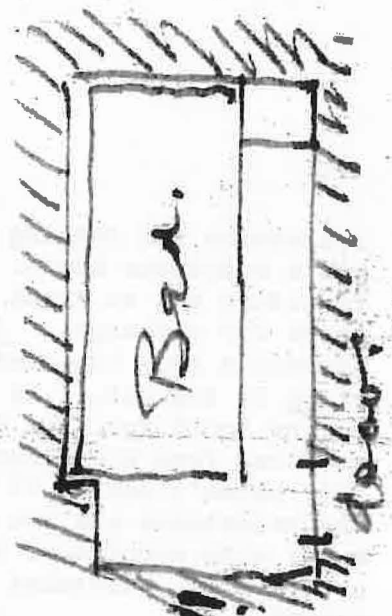
Doctor + self. Sleeping Dugout.



Room in ticket.

Aug. 27th 16.

all bed no room!!



- plan.